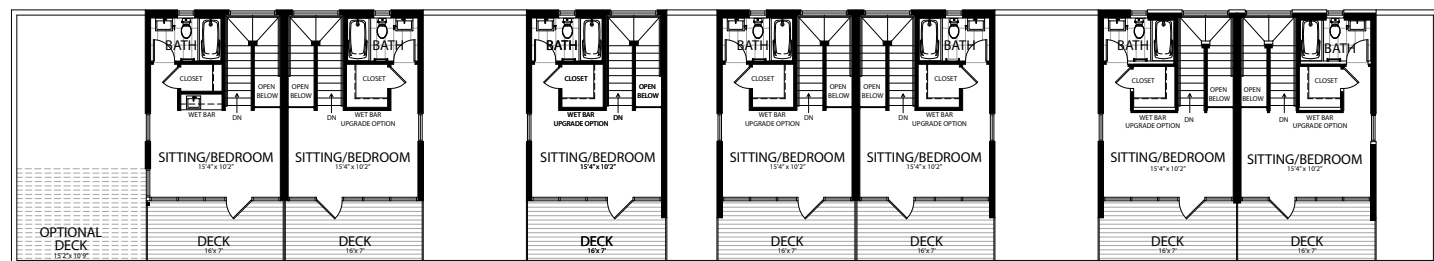
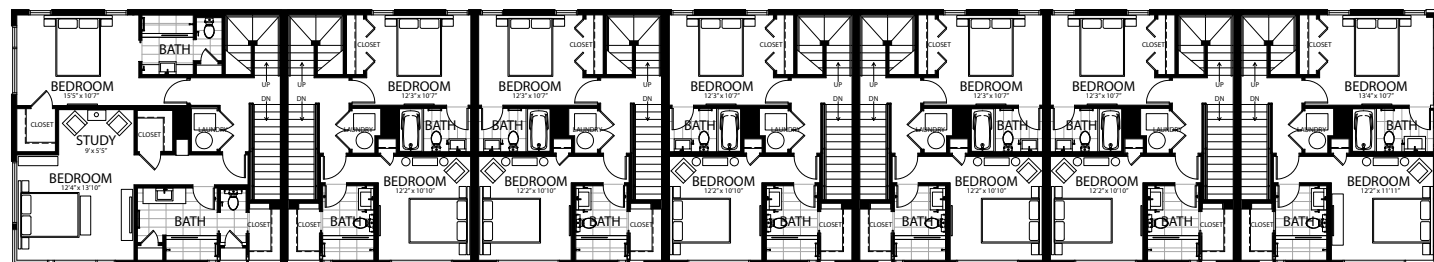




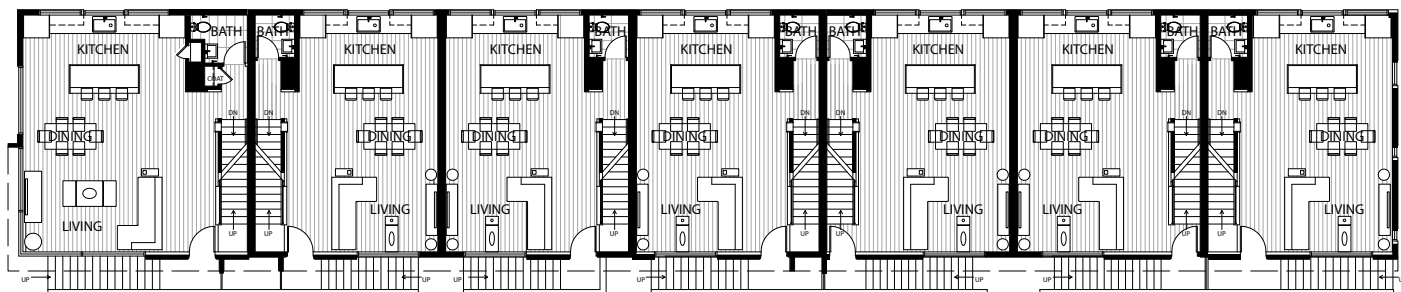
LEVEL 4 FLOOR PLAN



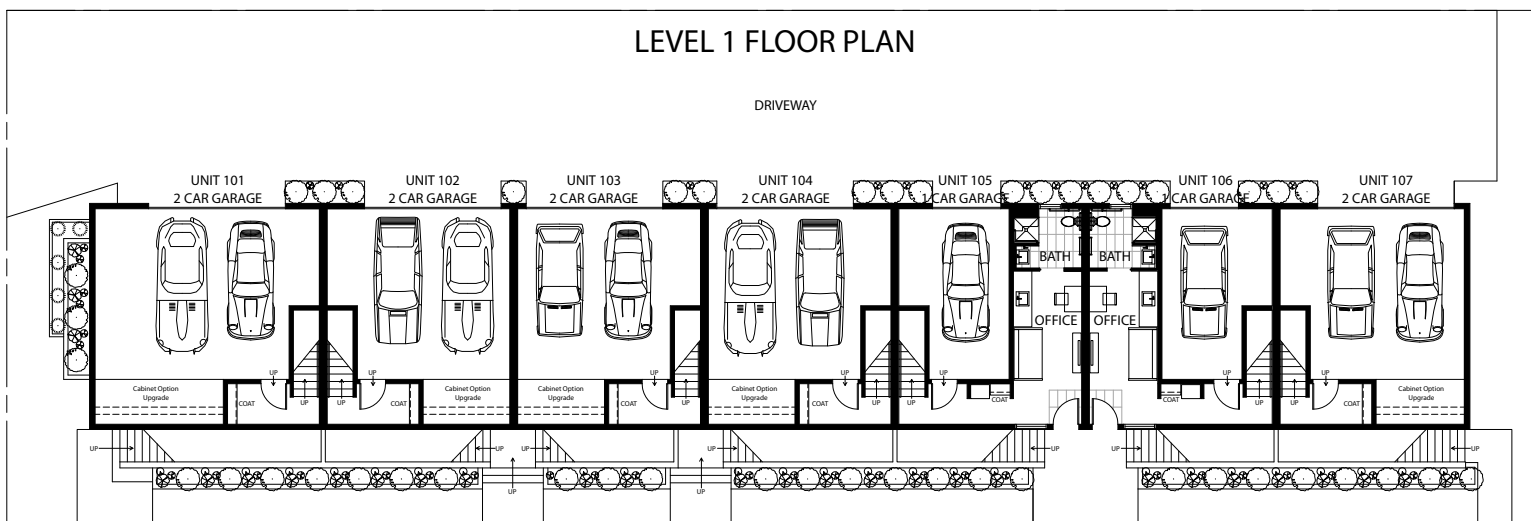
LEVEL 3 FLOOR PLAN



LEVEL 2 FLOOR PLAN



LEVEL 1 FLOOR PLAN



Prices, floorplans, standards features and related information are subject to change without prior notice. Drawings shown herein are not to scale. All images, graphics and design the copyright of Ray Byron Design Development, 2008. All Rights Reserved.

PURE TOWNHOMES



Conceptual Renderings - Subject to change without notice



PURE.Vision

PURE.Living

PURE.View

PURE.Architecture

PURE
is coming soon to the
Jefferson Park neighborhood

7 Townhomes
Starting in the lower \$400's

303.829.0952

PUREtownhomes.com

Experience spacious townhomes ranging from 1600 sq.ft. to 2000 sq.ft. Each unit incorporates enclosed parking with direct and secure access to your interior. Open floor plans provide flexible living and dining spaces. Rooftop bedroom/entertainment space brings you to your own private deck offering dramatic views of downtown. Quality, environmentally conscious materials surround you with attention to detail and design. Energy efficient architecture and construction. Experience exceptional living in architecture with a vision. Experience PURE.

PURE is located on the corner of Decatur Street and W. 27th Avenue in the Jefferson Park Neighborhood.

Pre-construction pricing is available. Please call or email to get on the reservation list!



Downtown View



PURE Material Package



PURE Material Package



Warm Modern Material Package



Warm Modern Material Package

Conceptual Renderings - Subject to change without notice

Amenities:

- Choice of 4 Designer Material Packages with options
- 4 Story Townhomes
- Attached 2 car garages
- Large rooftop decks with unobstructed views of downtown
- Exceptionally high ceilings throughout
 - 9'11" ceilings on main living area
 - 9' ceiling on bedroom levels
- Stainless steel appliances
 - 36" 5 burner stove w/ telescoping downdraft ventilation hood
 - Oven/Microwave combo
 - Dishwasher (Energy Star Rated)
- Contemporary cabinetry
- Granite countertops (including bathrooms)
- Glass backsplash in kitchen
- Hardwood floors
- Undermount sinks in kitchen and full bathrooms
- Italian tile in bathrooms
- Designer lighting throughout
- Pre-wired for security and intercom
- Pre-wired for Solar
- Fire protection system (sprinklers in all units)
- Rooftop water access
- Generous natural lighting
- Excellent sound attenuation between units
- Solid core doors throughout

Architecture by RBDD
 PURE Vision for a PURE Lifestyle

Options:

- Wet bar (included in Unit 101)
 - Built in cabinets
 - Sink
 - Minifridge
 - Wine rack
- Solar Panels
- Upgraded lighting (included in Unit 101)
- Intercom (included in Unit 101)
- Wiring for surround sound
- Rooftop gas access

Energy Efficient Features:

- Low-E, energy efficient, insulated windows
- High efficiency 13-seer central air conditioning
- Dual flush toilets
- Energy Star rated dishwashers
- Insulation at roof/ceiling to R38 and exterior walls to R20